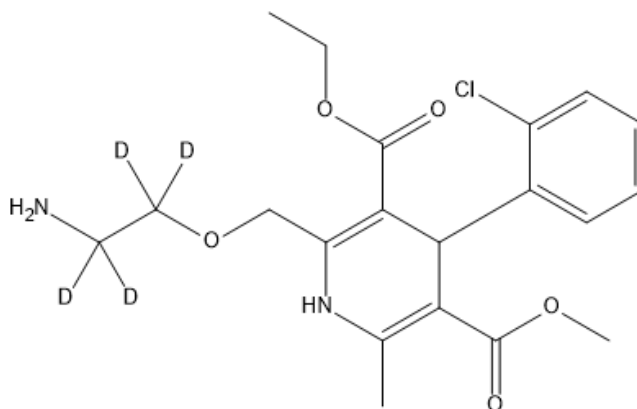




Sample MSDS of Amlodipine D4

SECTION 1 - CHEMICAL PRODUCT AND COMPANY IDENTIFICATION

PRODUCT NAME	Amlodipine D4
COMPANY IDENTIFICATION	CLEARSYNTH
For information call	+1-415-685-4395



SECTION 2 - COMPOSITION, INFORMATION ON INGREDIENTS

CAS #	1185246-14-3
CHEMICAL NAME	Amlodipine D4
PURITY (%)	98
EINECS#	---
HAZ SYMBOLS	---
RISK PHRASES	---

SECTION 3 - HAZARDS IDENTIFICATION

EMERGENCY OVERVIEW

Harmful if swallowed.

Potential Health Effects

The toxicological properties of this material have not been investigated. Use appropriate procedures to prevent opportunities for direct contact with the skin or eyes and to prevent inhalation. Compound is Non-hazardous, Non-Toxic/Non-Flammable.

[Go Back](#)

EYES	Immediately flush eyes with plenty of water for at least 15 minutes, occasionally lifting the upper and lower eyelids.
SKIN	Flush skin with plenty of water for at least 15 minutes while removing contaminated clothing and shoes.
INGESTION	Do NOT induce vomiting. If conscious and alert, rinse mouth and drink 2-4 cupfuls of milk or water.
INHALATION	Remove from exposure and move to fresh air immediately.
NOTES TO PHYSICIAN	---
SECTION 5 - FIRE FIGHTING MEASURES	
GENERAL INFORMATION	As in any fire, wear a self-contained breathing apparatus in pressure-demand, MSHA/NIOSH (approved or equivalent), and full protective gear. During a fire, irritating and highly toxic gases may be generated by thermal decomposition or combustion.
EXTINGUISHING MEDIA	In case of fire, use water, dry chemical, chemical foam, or alcohol-resistant foam.
SECTION 6 - ACCIDENTAL RELEASE MEASURES	
GENERAL INFORMATION	Use proper personal protective equipment as indicated in Section 8.
SPILLS/LEAKS	Clean up spills immediately, observing precautions in the Protective Equipment section. Sweep up, then place into a suitable container for disposal.
SECTION 7 - HANDLING and STORAGE	
HANDLING	Wash thoroughly after handling. Remove contaminated clothing and wash before reuse. Avoid contact with eyes, skin, and clothing. Avoid ingestion and inhalation.
STORAGE	
SECTION 8 - EXPOSURE CONTROLS, PERSONAL PROTECTION	
ENGINEERING CONTROLS	Use adequate general or local exhaust ventilation to keep airborne concentrations below the permissible exposure limits. Use process enclosure, local exhaust ventilation, or other engineering controls to control airborne levels.
PERSONAL PROTECTIVE EQUIPMENT	
EYES	Wear safety glasses and chemical goggles if splashing is possible.
SKIN	Wear appropriate protective gloves and clothing to prevent skin exposure.
CLOTHING	Wear appropriate protective clothing to minimize contact with skin.
RESPIRATORS	Wear a NIOSH/MSHA or European Standard EN 149 approved full-face piece airline respirator in the positive pressure mode with emergency escape provisions.

[Go Back](#)

PHYSICAL STATE	Not available
COLOR	Not available
ODOR	Not available
pH	Not available
VAPOR PRESSURE	Not available
VISCOSITY	Not available
BOILING POINT	Not available
MELTING POINT	Not available
AUTO IGNITION TEMPERATURE	Not available
FLASH POINT	Not available
EXPLOSION LIMITS, LOWER	Not available
EXPLOSION LIMITS, UPPER	Not available
SOLUBILITY IN WATER	Not available
LOSS ON DRYING	Not available
SPECIFIC GRAVITY/DENSITY	Not available
MOLECULAR FORMULA	C ₂₀ H ₂₁ D ₄ CIN ₂ O ₅
MOLECULAR WEIGHT	412.90 g/mol
SECTION 10 - STABILITY AND REACTIVITY	
CHEMICAL STABILITY	Stable under normal temperatures and pressures.
CONDITIONS TO AVOID	Incompatible materials, strong oxidants.
INCOMPATIBILITIES WITH OTHER MATERIALS	Strong oxidizing agents, strong bases.
HAZARDOUS DECOMPOSITION PRODUCTS	Nitrogen oxides, carbon monoxide, irritating and toxic fumes and gases, carbon dioxide, nitrogen.
HAZARDOUS POLYMERIZATION	Has not been reported.
SECTION 11 - TOXICOLOGICAL INFORMATION	
RTECS#: CAS#: LD50/LC50: CAS#: Draize test, Rabbit, eye: NA Mouse: NA , Rabbit: NA, rat: NA. Carcinogenicity: Salicylamide - Not listed by ACGIH, IARC, NIOSH, NTP, or OSHA. See actual entry in RTECS for complete information.	

[Go Back](#)

SECTION 12 - DISPOSAL CONSIDERATIONS

Dispose of in a manner consistent with federal, state, and local regulations.

SECTION 13 - TRANSPORT INFORMATION

IATA No information available. IMO No information available. RID/ADR No information available.

SECTION 14 - REGULATORY INFORMATION

European/International Regulations

European Labeling in Accordance with EC Directives

Hazard Symbols: XN

Risk Phrases:

R 22 Harmful if swallowed.

Safety Phrases:

WGK (Water Danger/Protection)

CAS#United Kingdom Occupational Exposure Limits

United Kingdom Maximum Exposure Limits

Canada

CAS is listed on Canada's DSL List.

CAS is not listed on Canada's Ingredient Disclosure List.

Exposure Limits

US FEDERAL

TSCA

CAS is listed on the TSCA inventory.

SECTION 15 - ADDITIONAL INFORMATION

The information above is believed to be accurate and represents the best information currently available to us. However, we make no warranty of merchantability or any other warranty, express or implied, with respect to such information, and we assume no liability resulting from its use. Users should make their own investigations to determine the suitability of the information for their particular purposes. In no way shall the company be liable for any claims, losses, or damages of any third party or for lost profits or any special, indirect, incidental, consequential or exemplary damages, howsoever arising, even if the company has been advised of the possibility of such damages.

Mallikharjuna Reddy

Sr. Manager - (Quality Control)

sales@clearsynth.com | www.clearsynth.com | Worldwide Helpline No:- +1-415-685-4395 | CIN : U24100MH2010PLC201433

"The 'Catalyst' in making **your research** work"

Go Back