

# TOLUENE 3,4-DITHIOL ZINC DERIVATIVE EXTRA PURE MSDS

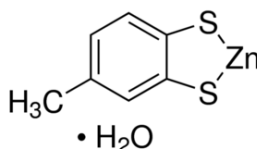
CAS No: 123333-86-8 MSDS

## MATERIAL SAFETY DATA SHEET (MSDS)

### SECTION 1: Identification of the substance/mixture and of the company/undertaking

#### 1.1. Product identifier

Product form : Substance  
:  
EC no : 249-812-9  
CAS No : 123333-86-8  
Product code : 6338A  
Chemical structure :



Synonyms : Zinc dithiol

#### 1.2. Relevant identified uses of the substance or mixture and uses advised against

##### 1.2.1. Relevant identified uses

Use of the substance/mixture : Laboratory chemicals, Manufacture of substances

##### 1.2.2. Uses advised against

No additional information available

#### 1.3. Details of the supplier of the safety data sheet

LOBA CHEMIE PVT.LTD.  
107 Wode House Road, Jehangir Villa, Colaba  
400005 Mumbai - INDIA  
T +91 22 6663 6663 - F +91 22 6663 6699  
[info@lobachemie.com](mailto:info@lobachemie.com) - [www.lobachemie.com](http://www.lobachemie.com)

#### 1.4. Emergency telephone number

Emergency number : + 91 22 6663 6663 (9:00am - 6:00 pm)

### SECTION 2: Hazards identification

#### 2.1. Classification of the substance or mixture

##### Classification according to Regulation (EC) No. 1272/2008 [CLP]

Skin corrosion/irritation, H315  
Category 2  
Serious eye damage/eye H319  
irritation, Category 2  
Specific target organ H335  
toxicity — Single  
exposure, Category 3,  
Respiratory tract irritation

Full text of classification categories and H statements : see section 16

# TOLUENE 3,4-DITHIOL ZINC DERIVATIVE Extra Pure

## Safety Data Sheet

### Classification according to Directive 67/548/EEC or 1999/45/EC

Xn; R20/21/22

C; R34

Xi; R38

Full text of R-phrases: see section 16

### Adverse physicochemical, human health and environmental effects

No additional information available

## 2.2. Label elements

### Labelling according to Regulation (EC) No. 1272/2008 [CLP]

Hazard pictograms (CLP)

:



GHS07

Signal word (CLP)

: Warning

Hazard statements (CLP)

: H315 - Causes skin irritation  
H319 - Causes serious eye irritation  
H335 - May cause respiratory irritation

Precautionary statements (CLP)

: P261 - Avoid breathing dust/fume/gas/mist/vapours/spray  
P305+P351+P338 - IF IN EYES: Rinse cautiously with water for several minutes.  
Remove contact lenses, if present and easy to do. Continue rinsing

## 2.3. Other hazards

No additional information available

## SECTION 3: Composition/information on ingredients

### 3.1. Substance

Name : TOLUENE 3,4-DITHIOL ZINC DERIVATIVE Extra Pure

CAS No : 123333-86-8

EC no : 249-812-9

Full text of R- and H-phrases: see section 16

### 3.2. Mixture

Not applicable

# TOLUENE 3,4-DITHIOL ZINC DERIVATIVE Extra Pure

## Safety Data Sheet

### SECTION 4: First aid measures

#### 4.1. Description of first aid measures

First-aid measures after inhalation	: Remove victim to fresh air and keep at rest in a position comfortable for breathing. Immediately call a POISON CENTER or doctor/physician.
First-aid measures after skin contact	: Immediately call a POISON CENTER or doctor/physician. Specific measures (see ... on this label). Wash with plenty of soap and water. Wash contaminated clothing before reuse. Remove/Take off immediately all contaminated clothing. Rinse skin with water/shower.
First-aid measures after eye contact	: Rinse cautiously with water for several minutes. Remove contact lenses, if present and easy to do. Continue rinsing. Immediately call a POISON CENTER or doctor/physician.
First-aid measures after ingestion	: Rinse mouth. Call a POISON CENTER or doctor/physician if you feel unwell. Do NOT induce vomiting. Immediately call a POISON CENTER or doctor/physician.

#### 4.2. Most important symptoms and effects, both acute and delayed

Symptoms/injuries after inhalation	: May cause respiratory irritation.
Symptoms/injuries after skin contact	: Causes skin irritation.
Symptoms/injuries after eye contact	: Causes serious eye irritation.

#### 4.3. Indication of any immediate medical attention and special treatment needed

Treat symptomatically.

### SECTION 5: Firefighting measures

#### 5.1. Extinguishing media

Suitable extinguishing media	: dry chemical powder, alcohol-resistant foam, carbon dioxide (CO <sub>2</sub> ).
Unsuitable extinguishing media	: Do not use a heavy water stream.

#### 5.2. Special hazards arising from the substance or mixture

No additional information available

#### 5.3. Advice for firefighters

Protection during firefighting	: Do not attempt to take action without suitable protective equipment.
--------------------------------	--

### SECTION 6: Accidental release measures

#### 6.1. Personal precautions, protective equipment and emergency procedures

##### 6.1.1. For non-emergency personnel

Emergency procedures	: Evacuate unnecessary personnel.
----------------------	-----------------------------------

##### 6.1.2. For emergency responders

Protective equipment	: Use personal protective equipment as required.
Emergency procedures	: Stop release.

#### 6.2. Environmental precautions

Avoid release to the environment.

#### 6.3. Methods and material for containment and cleaning up

Methods for cleaning up	: Clear up rapidly by scoop or vacuum.
-------------------------	--

#### 6.4. Reference to other sections

No additional information available

### SECTION 7: Handling and storage

#### 7.1. Precautions for safe handling

Precautions for safe handling	: Do not breathe dust/fume/gas/mist/vapours/spray.
Hygiene measures	: Do not eat, drink or smoke when using this product. Wash ... thoroughly after handling. Wash contaminated clothing before reuse.

# TOLUENE 3,4-DITHIOL ZINC DERIVATIVE Extra Pure

## Safety Data Sheet

### 7.2. Conditions for safe storage, including any incompatibilities

Technical measures	: Comply with applicable regulations.
Storage conditions	: Store in original container. Keep container tightly closed. Store in a dry place. Protect from moisture.

### 7.3. Specific end use(s)

No additional information available

## SECTION 8: Exposure controls/personal protection

### 8.1. Control parameters

No additional information available

### 8.2. Exposure controls

Hand protection	: protective gloves
Eye protection	: Chemical goggles or face shield
Skin and body protection	: Wear suitable protective clothing
Respiratory protection	: Wear respiratory protection

## SECTION 9: Physical and chemical properties

### 9.1. Information on basic physical and chemical properties

Physical state	: Solid
Molecular mass	: 219.64 g/mol
Colour	: White crystalline.
Odour	: odourless.
Odour threshold	: No data available
pH	: No data available
Relative evaporation rate (butylacetate=1)	: No data available
Melting point	: 31 °C
Freezing point	: No data available
Boiling point	: 135 °C
Flash point	: > 113 °C
Auto-ignition temperature	: No data available
Decomposition temperature	: No data available
Flammability (solid, gas)	: No data available
Vapour pressure	: No data available
Relative vapour density at 20 °C	: No data available
Relative density	: No data available

# TOLUENE 3,4-DITHIOL ZINC DERIVATIVE Extra Pure

## Safety Data Sheet

Density	: 1.18 g/cm <sup>3</sup>
Solubility	: Water: Negligible (< 0.1%)
Log Pow	: No data available
Viscosity, kinematic	: No data available
Viscosity, dynamic	: No data available
Explosive properties	: No data available
Oxidising properties	: No data available
Explosive limits	: No data available

### 9.2. Other information

No additional information available

## SECTION 10: Stability and reactivity

### 10.1. Reactivity

Thermal decomposition generates : Corrosive vapours.

### 10.2. Chemical stability

Stable under normal conditions.

### 10.3. Possibility of hazardous reactions

No additional information available

### 10.4. Conditions to avoid

Direct sunlight. Air contact. Moisture.

### 10.5. Incompatible materials

No additional information available

### 10.6. Hazardous decomposition products

Thermal decomposition generates : Corrosive vapours.

## SECTION 11: Toxicological information

### 11.1. Information on toxicological effects

Acute toxicity : Not classified

Skin corrosion/irritation : Causes skin irritation.

Serious eye damage/irritation : Causes serious eye irritation.

Respiratory or skin sensitisation : Not classified

Germ cell mutagenicity : Not classified

Carcinogenicity : Not classified

Reproductive toxicity : Not classified

Specific target organ toxicity (single exposure) : May cause respiratory irritation.

Specific target organ toxicity (repeated exposure) : Not classified

# TOLUENE 3,4-DITHIOL ZINC DERIVATIVE Extra Pure

## Safety Data Sheet

Aspiration hazard : Not classified

Potential adverse human health effects and symptoms : Harmful if swallowed. Harmful in contact with skin.

### SECTION 12: Ecological information

#### 12.1. Toxicity

No additional information available

#### 12.2. Persistence and degradability

No additional information available

#### 12.3. Bioaccumulative potential

No additional information available

#### 12.4. Mobility in soil

No additional information available

#### 12.5. Results of PBT and vPvB assessment

No additional information available

#### 12.6. Other adverse effects

No additional information available

### SECTION 13: Disposal considerations

#### 13.1. Waste treatment methods

Product/Packaging disposal recommendations : Dispose of contents/container to ...

### SECTION 14: Transport information

In accordance with ADR / RID / IMDG / IATA / ADN

#### 14.1. UN number

UN-No. (ADR)	: 3335
UN-No. (IMDG)	: 3335
UN-No.(IATA)	: 3335
UN-No.(ADN)	: 3335
UN-No. (RID)	: 3335

#### 14.2. UN proper shipping name

Proper Shipping Name (ADR)	: aviation regulated solid, n.o.s.
Proper Shipping Name (IMDG)	: AVIATION REGULATED SOLID, N.O.S.
Proper Shipping Name (IATA)	: AVIATION REGULATED SOLID, N.O.S.
Proper Shipping Name (ADN)	: Aviation regulated solid, n.o.s.

# TOLUENE 3,4-DITHIOL ZINC DERIVATIVE Extra Pure

## Safety Data Sheet

Proper Shipping Name (RID)	: Aviation regulated solid, n.o.s.
Transport document description (ADR)	: UN 3335 aviation regulated solid, n.o.s., 9
Transport document description (IMDG)	: UN 3335 AVIATION REGULATED SOLID, N.O.S., 9
Transport document description (IATA)	: UN 3335 AVIATION REGULATED SOLID, N.O.S., 9, III
Transport document description (ADN)	: UN 3335 Aviation regulated solid, n.o.s., 9
Transport document description (RID)	: UN 3335 Aviation regulated solid, n.o.s., 9

### 14.3. Transport hazard class(es)

#### ADR

Transport hazard class(es) (ADR) : 9

#### IMDG

Transport hazard class(es) (IMDG) : 9

Danger labels (IMDG) : 9



#### IATA

Transport hazard class(es) (IATA) : 9

Hazard labels (IATA) : 9



#### ADN

Transport hazard class(es) (ADN) : 9

#### RID

Transport hazard class(es) (RID) : 9

### 14.4. Packing group

Packing group (ADR)	: Not applicable
Packing group (IMDG)	: Not applicable
Packing group (IATA)	: III
Packing group (ADN)	: Not applicable
Packing group (RID)	: Not applicable

### 14.5. Environmental hazards

Dangerous for the environment	: No
Marine pollutant	: No
Other information	: No supplementary information available

### 14.6. Special precautions for user

#### - Overland transport

Transport regulations (ADR)	: Not subject
Classification code (ADR)	: M11
EAC code	: 2Z

# TOLUENE 3,4-DITHIOL ZINC DERIVATIVE Extra Pure

## Safety Data Sheet

### - Transport by sea

Special provision (IMDG) : 960  
Stowage category (IMDG) : None

### - Air transport

PCA Excepted quantities (IATA) : E1  
PCA Limited quantities (IATA) : Y956  
PCA limited quantity max net quantity (IATA) : 30kgG  
PCA packing instructions (IATA) : 956  
PCA max net quantity (IATA) : 100kg  
CAO packing instructions (IATA) : 956  
CAO max net quantity (IATA) : 200kg  
Special provision (IATA) : A27  
ERG code (IATA) : 9A

### - Inland waterway transport

Classification code (ADN) : M11

### - Rail transport

Classification code (RID) : M11  
Limited quantities (RID) : 0

### 14.7. Transport in bulk according to Annex II of MARPOL 73/78 and the IBC Code

Not applicable

## SECTION 15: Regulatory information

### 15.1. Safety, health and environmental regulations/legislation specific for the substance or mixture

#### 15.1.1. EU-Regulations

No REACH Annex XVII restrictions

TOLUENE 3,4-DITHIOL ZINC DERIVATIVE Extra Pure is not on the REACH Candidate List

TOLUENE 3,4-DITHIOL ZINC DERIVATIVE Extra Pure is not on the REACH Annex XIV List

#### 15.1.2. National regulations

##### Germany

12th Ordinance Implementing the Federal Immission Control Act - 12.BImSchV : Is not subject of the 12. BImSchV (Hazardous Incident Ordinance)

##### Denmark

Recommendations Danish Regulation : Young people below the age of 18 years are not allowed to use the product

### 15.2. Chemical safety assessment

No additional information available



# TOLUENE 3,4-DITHIOL ZINC DERIVATIVE Extra Pure

## Safety Data Sheet

### SECTION 16: Other information

Full text of R-, H- and EUH-phrases:

Eye Irrit. 2	Serious eye damage/eye irritation, Category 2
Skin Irrit. 2	Skin corrosion/irritation, Category 2
STOT SE 3	Specific target organ toxicity — Single exposure, Category 3, Respiratory tract irritation
H315	Causes skin irritation
H319	Causes serious eye irritation
H335	May cause respiratory irritation
R20/21/22	Harmful by inhalation, in contact with skin and if swallowed
R34	Causes burns
R38	Irritating to skin
C	Corrosive
Xi	Irritant
Xn	Harmful

*This information is based on our current knowledge and is intended to describe the product for the purposes of health, safety and environmental requirements only. It should not therefore be construed as guaranteeing any specific property of the product*